

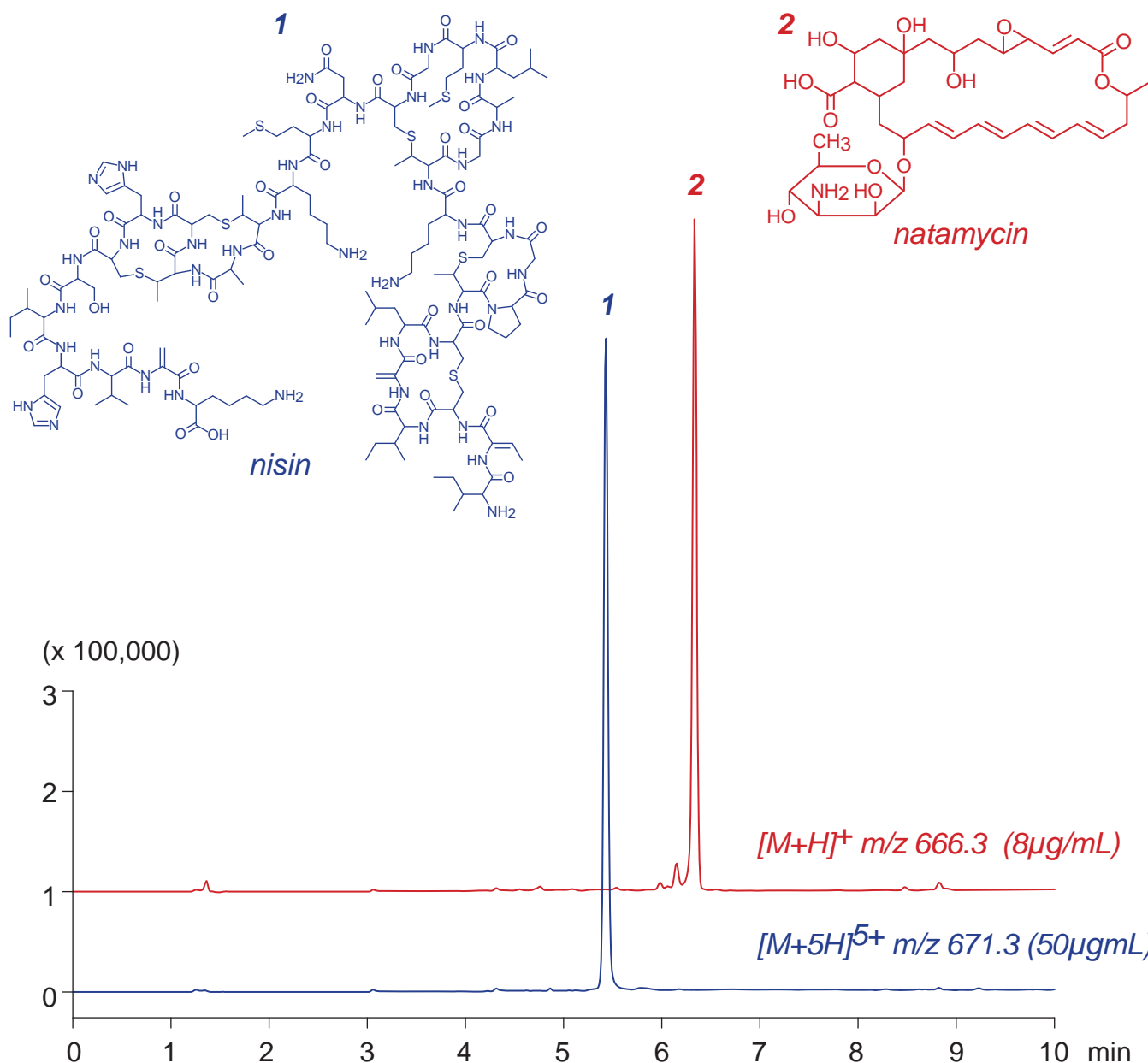
Cadenza CW-C18

100 x 3 mm

HPLC COLUMN APPLICATION

LC-MS: Nisin, Natamycin (Food preservatives)

ナisin, ナタマイシン (食品保存料) の LC-MS 分析



Cadenza CW-C18, 100 x 3 mm

A: water / formic acid = 100 / 0.1

B: acetonitrile / formic acid = 100 / 0.1

0-95%B (0-10min)

0.4mL/min (7MPa), 37°C, Single Quad. MS (ESI)

5µL (8-50µg/mL, 1% HCOOH)