

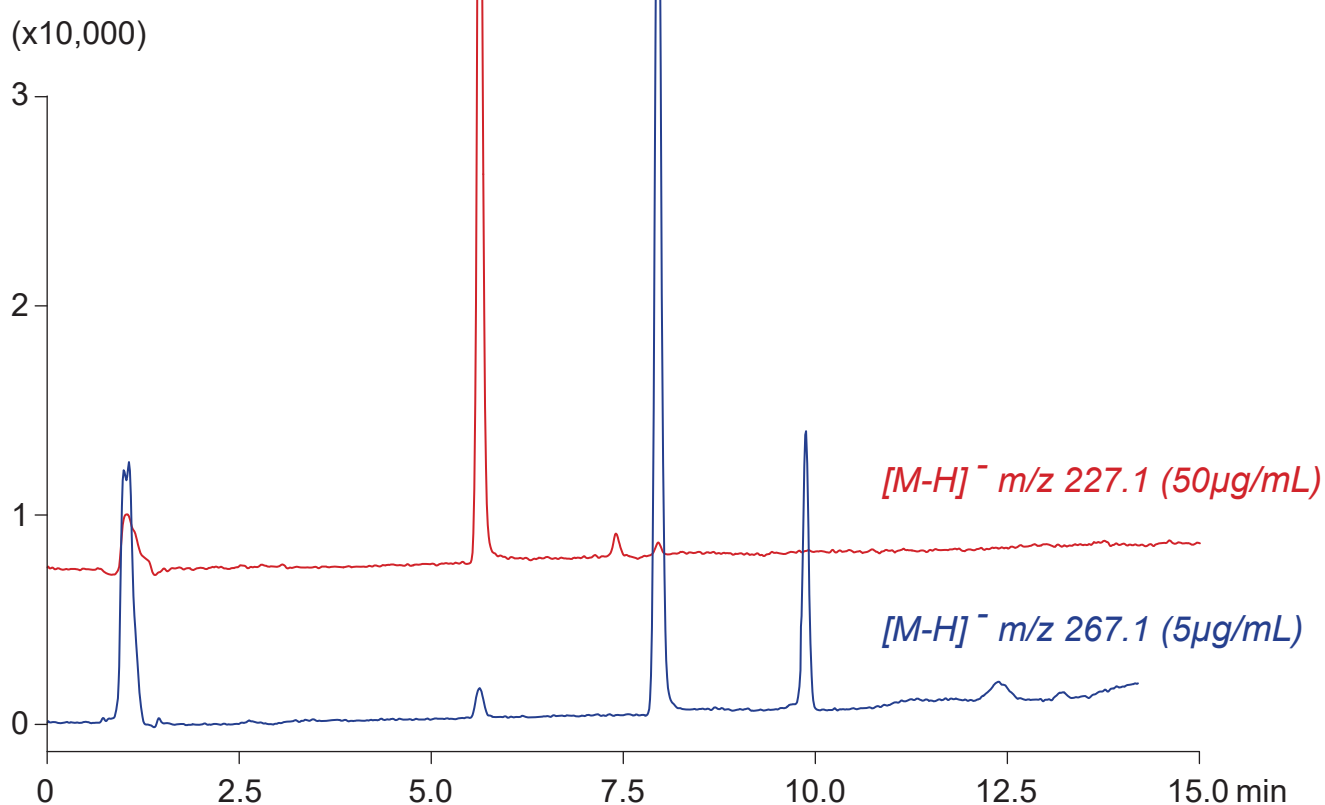
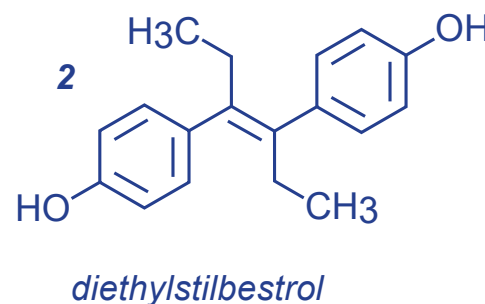
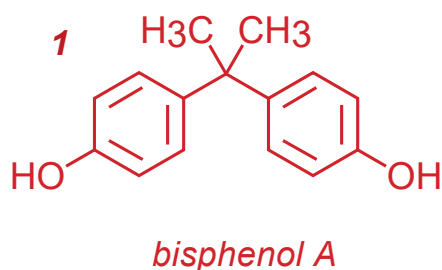
Cadenza CD-C18

100 x 3 mm

HPLC COLUMN APPLICATION

LC-MS: Bisphenol A, diethylstilbestrol (Endocrine disrupter)

ビスフェノールA , ジエチルstilbestrol (内分泌攪乱物質) の LC-MS分析



Cadenza CD-C18, 100 x 3 mm

A: water / acetonitrile / acetic acid = 90 / 10 / 0.1

B: water / acetonitrile / acetic acid = 10 / 90 / 0.1

30-100%B (0-15min)

0.4mL/min (7MPa), 37°C, Single Quad. MS (APCI)

10 $\mu$ L (5-50 $\mu$ g/mL, MeOH / water / AcOH = 30 / 70 / 1)