

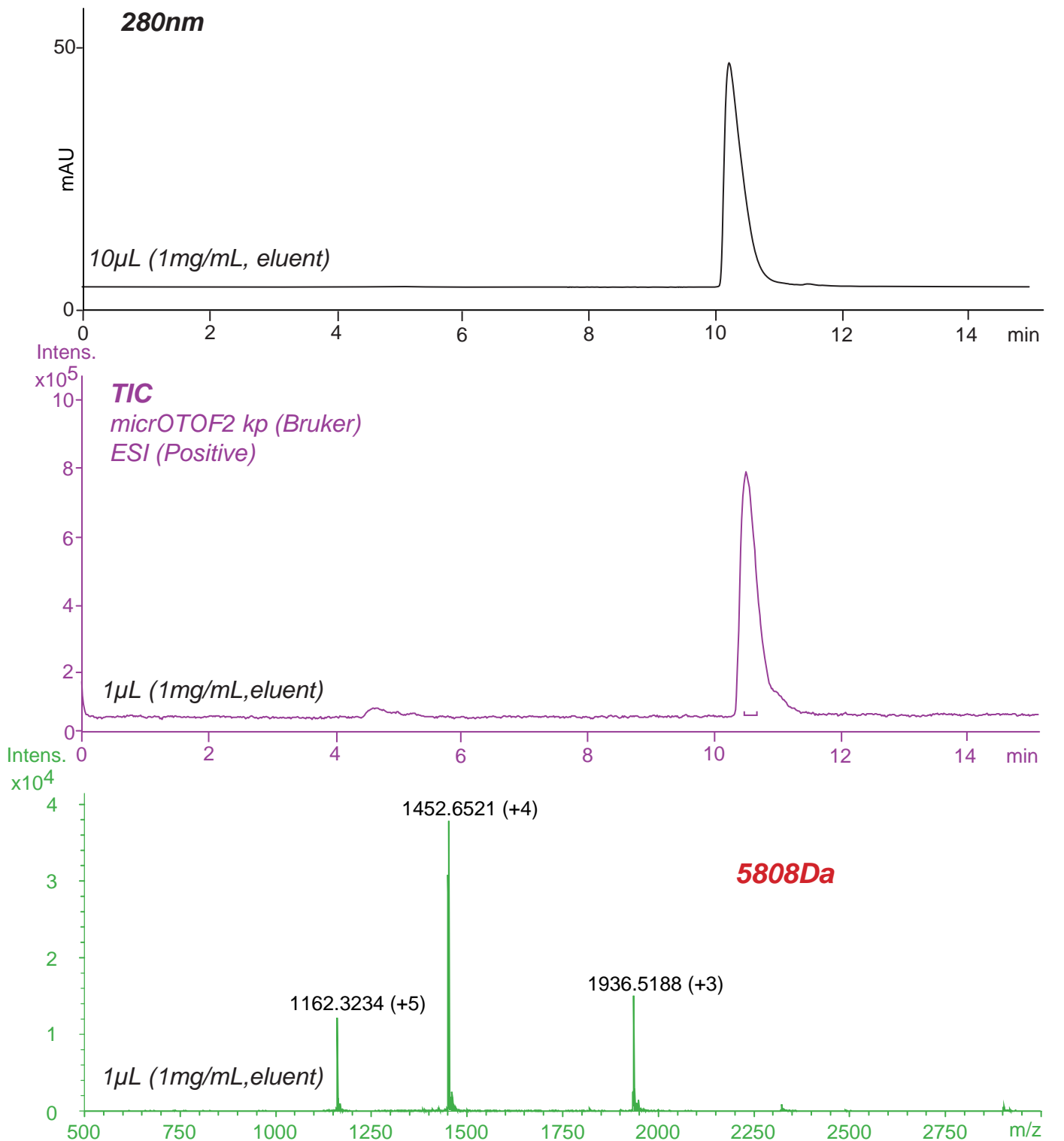
Intrada SEC

250 x 4.6 mm

HPLC COLUMN APPLICATION

SEC-MS: Insulin (Human, recombinant)

インスリン (ヒト, 組替え体) の SEC-MS 分析



Intrada SEC, 250 x 4.6 mm
 100mM ammonium formate
 0.3mL/min (6MPa), 37°C